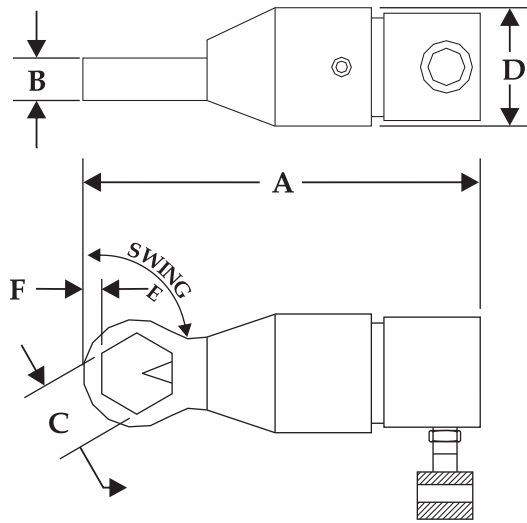


TRITORC HEAVY DUTY HYDRAULIC NUT SPLITTERS



Model	Stud Diameter in (mm)	Nut A/F in(mm)	A in(mm)	B in(mm)	C in(mm)	D in(mm)	E	F in(mm)	Weight lbs(kg)
ASL 105	7/16"-7/8" (11-22)	5/8"-1 7/16" (16-36)	11" (271)	1.05 (38)	1.49" (38)	4.13" (105)	60°	0.39" (10)	20 (9)
ASL 200	7/8"-1 1/4" (22 - 31)	1 5/16" - 2" (33-50)	11.29" (287)	1.05" (38)	2.12" (54)	4.25" (108)	45°	0.51" (13)	21 (10)
ASL 204	1 1/4"-1 1/2" (32-38)	1 7/8"-2 3/8" (47-60)	15.16" (385)	2 1/4" (57)	2.52" (64)	6.45" (164)	30°	0.55" (14)	71 (32)
ASL 210	1 3/8"-1 3/4" (39-44)	2 1/16"-2 3/4" (52-70)	16.10" (398)	2 1/4" (57)	2.87" (73)	6.45" (164)	30°	0.70" (18)	72 (33)
ASL 308	1.3/4"-2.1/4" (45-57)	2.5/8"-3.1/2" (70-89)	17.75" (460)	3" (77.8)	3.89" (99)	8.42" (214)	30°	0.75" (19)	158 (72)
ASL 314	2"-2.1/2" (50-64)	3.1/8"-3.7/8" (79-98)	18" (488)	3.12" (79.4)	4.25" (108)	8.42" (214)	30°	0.86" (22.2)	163 (74)
ASL 404	2.1/2"-2.3/4" (64-70)	3.3/4"-4.1/4" (95-108)	22.75" (579)	3.75" (95.3)	4.64" (118)	9.88" (251)	60°	1.14" (28.6)	251 (114)
ASL 500	3"-3.1/4" (76-83)	4.1/2"-5" (114-127)	23" (590)	4.12" (104.8)	5.39" (137)	9.88" (251)	60°	1.14" (28.6)	256 (116)
ASL 506	3.1/4"-3.1/2" (83-89)	4.7/8"-5.3/8" (124-136)	23.5" (598)	4.12" (104.8)	5.86" (149)	9.88" (251)	60°	1.14" (28.6)	262 (119)

TRITORC Nut Splitter is supplied Complete with:

- ▶ Hydraulic Cylinder
- ▶ Housing
- ▶ Chisel
- ▶ Set of Allen Keys
- ▶ Spacer Set
- ▶ Packed in a Rugged Steel Tool Box.

Application

- ▶ Designed for Operator Comfort
- ▶ Removes Corroded Nuts Faster
- ▶ Removes Frozen Nuts Safely
- ▶ Fits Tight Spaces
- ▶ Cuts through the Hardest Nuts